



CITY MANAGER

\$105,000 - \$142,500

Plus Excellent Benefits

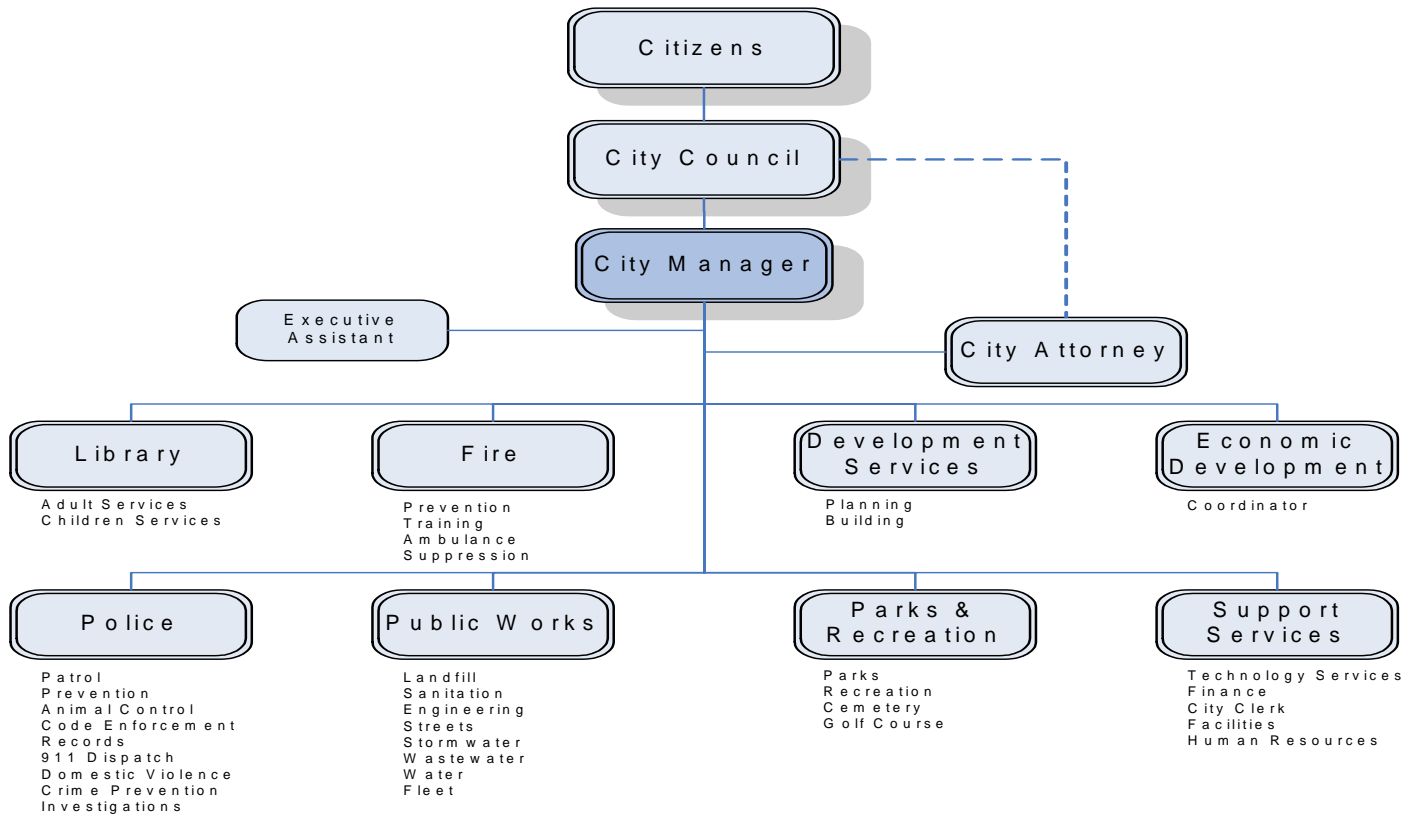
Apply By

July 13, 2009

(first review, open until filled)

PROTHMAN





WHY APPLY?

This is an excellent opportunity for a talented public sector professional to make a difference in a well managed community that takes pride in its history, natural beauty and quality of life.

Walla Walla is financially sound and is dedicated to providing outstanding services to its citizens and a welcoming experience to its visitors. If you are interested in making a difference in an historic community that takes pride in its natural beauty, local culture and quality of life, this is the right position for you!

THE COMMUNITY

The name Walla Walla is of Indian origin and means "many waters." Both the Cayuse and Walla Walla tribes called the Walla Walla Valley home.



The City of Walla Walla has a rich history in the State of Washington and the Pacific Northwest. Located in the heart of Southeast Washington's wine country, historic Walla Walla is a thriving community filled with so many activities and beautiful sights that you'll never want to leave.

Named one of America's Great Main Streets by the National Trust for Historic Preservation, downtown Walla Walla is a favorite destination. Although not a large city, Walla Walla pulses with a strong sense of community and culture. Museums abound, as do art galleries, shops, dramatic productions, indoor and outdoor concerts, cafes and restaurants, wineries and wine tasting rooms.



With all four seasons on display, you'll find year-round outdoor activities, including nearby snow skiing, floating on the area's rivers and lakes, hiking in the mountains or just picnicking with your family. As the county seat for Walla Walla County, the City serves as the hub for this diverse community with a population of approximately 31,000 residents. The City of Walla Walla is the financial, civic, medical, and employment center for Walla Walla County and the southeastern corner of the State of Washington.

Education plays an important role in the area. The City has outstanding public and private schools. Whitman College, a four year liberal arts college and the oldest college in the state, is rated in the top 100 liberal arts colleges in the *Princeton Review*. Other higher educational institutions

include Walla Walla Community College and Walla Walla University, a private four year institution in College Place, an incorporated municipality adjacent to the City.



Cultural activities in the City include the oldest continuous symphony west of the Mississippi; civic and college theaters; an annual

outdoor summer musical; arts and crafts; and lecture series sponsored by all the colleges. The annual Hot Air Balloon Stampede in May, July 4th in the Park, the Southeast Washington Rodeo, and Walla Walla Fair and Frontier Days are a few of the annual and regional activities. The Walla Walla Valley has seen strong growth in the production of world-class premium wines and is the host of spring and holiday barrel tasting events at many of the area's internationally recognized wineries.

Considered one of the most attractive communities in Washington State, the City is close to recreational activities in the Blue Mountains, and the Snake and Columbia Rivers are nearby. Walla Walla is a community that enjoys an affordable lifestyle with excellent programs for residents of all ages.

THE CITY

Incorporated in 1862, the City operates under the Council/Manager form of government. The City Manager is responsible for all the operations of the City, including the management of approximately 264 fulltime employees and a biennial budget of \$148 million.

The City management team includes the Directors of Parks and Recreation, Public Library, Public Works, Development Services, and Support Services; the Police Chief, Fire Chief, and City Attorney, and the Executive Assistant and Economic Development Coordinator in the City Manager's office. The City enjoys a high degree of public involvement and collaboration on the fifteen Boards, Commissions, and Advisory Groups that work with the City staff.

THE POSITION

Reporting to the City Council, the City Manager serves as the Chief Executive Officer of the City. The City Manager directs and supervises all activities of the City departments, appoints and removes all staff, and implements policy as established by the City Council. He/She directs issues to the City Council for consideration and recommends policy options and also conducts research and analysis at the request of the City Council.

The City Manager represents the City on numerous committees and public-private projects. He/She will meet with private citizens, civic groups, other government leaders and business organizations to provide information on City policy, programs and activities. The City Manager also serves as the primary contact for the news media and will respond to citizen inquiries, questions and complaints.

CURRENT ISSUES & PROJECTS

Continuing to Manage the Economic Downturn

While the City enters 2009 with a balanced budget, the uncertainty of the economic climate will be a challenge for the new City Manager to ensure that projected revenues perform to expectations.



Fire Fighters Labor Contract Resolution

The City and IOFF local 404 are presently in labor contract negotiations. The matter is now before a mediator. It is expected that the new City Manager will play a major role in the settlement of this contract.

Ambulance Service Funding

The City currently provides ambulance services to all of Walla Walla County. Revenues including Medicare and Medicaid are not keeping up with escalation costs to provide this service. As a result, the City now believes it is subsidizing ambulance services to non-Walla Walla citizens. This will be an important issue facing the new City Manager.

Infrastructure Funding

Walla Walla is an older community with aging infrastructure such as streets, water and sewer. While the City does have a current Capital

Improvement Plan, needs certainly outweigh current fund opportunities.

IDEAL CANDIDATE PROFILE

The successful candidate will be a talented manager and leader who understands all aspects of municipal government and has an appreciation of the challenges currently facing cities. He/she should be honest, hard-working, and approachable by citizens, staff and Council, while assisting in establishing an atmosphere of trust, mutual respect, and cooperation. Candidates will be able to organize and express ideas through excellent oral and written communications to a wide variety of audiences such as the City Council, community groups and other boards and committees. The selected candidate will be politically astute and demonstrate an unquestionable sense of integrity.

The new City Manager must be able to accept and support decisions in a positive manner and take a collaborative approach in providing city services. The successful candidate will have excellent organizational development skills, will delegate appropriately, and have the ability to foster a strong team environment. He/she will have a track record of implementing policies and systems to create and maintain a high-performance, customer service focused, organizational culture.

The new City Manager will be a good listener who consistently deals well with personnel throughout all levels of the organization, and can be relied upon to serve as a mentor for those interested in personal and professional development. The candidate will also bring an appropriate sense of humor to the job, as well as a flexible “can-do” attitude.

EDUCATION & EXPERIENCE

Competitive candidates should have at least five to seven years of senior public sector management experience, such as City Manager/Administrator, deputy/assistant, or department director, in a city or county or other applicable public sector agency of similar or larger complexity and size. A bachelor's degree in public administration, business, or other applicable field is required. A master's degree is preferred.

COMPENSATION & BENEFITS

- **\$105,000 to \$142,500**
- Professional Services Contract with Severance
- Medical
- Dental
- Vision
- Life Insurance
- Employee Assistance Program
- Vacation
- Sick Leave
- Floating Holidays
- Auto Allowance
- Washington State PERS Retirement
- Deferred Compensation



For more information about the City of Walla Walla, please visit:

www.ci.walla-walla.wa.us

The City of Walla Walla is an Equal Opportunity Employer. All qualified candidates are strongly encouraged to apply by **July 13, 2009** (first review, open until filled). To apply, please send a letter of interest, resume, completed application and answers to the supplemental questions to Prothman via email at humanresources@prothman.com or mail to the address below. The application form and the supplemental questions can be found at www.prothman.com.



206 368 0050 {ph} 206 368 0060 {fx}

3633 136th PL SE, Suite 206 Bellevue, WA 98006

humanresources@prothman.com www.prothman.com